

BERNAT VIVANCOS

---

# MOUSTIK'S ÉTUDE

FOR ORGAN

---



[www.bernatvivancos.com](http://www.bernatvivancos.com)

Ref. 0105



# - Moustik's étude -

étude pour la vitesse et la respiration circulaire

pour saxophone alto solo

**A**

Lent, librement...

Saxophone  
alto en Mi b

Musical notation for the first part of section A, starting with a long note and dynamic markings *ppp* and *mf*.

*en accélérant*

Musical notation for the second part of section A, featuring a sequence of notes with dynamic marking *p*.

*en retardant*

Musical notation for the third part of section A, featuring a sequence of notes with a final note marked with an asterisk.

\* Plus or moins, ad libitum...

**A<sub>1</sub>**

A tempo. Le plus vite possible

Musical notation for the first part of section A1, featuring a sequence of notes with dynamic marking *pp*.

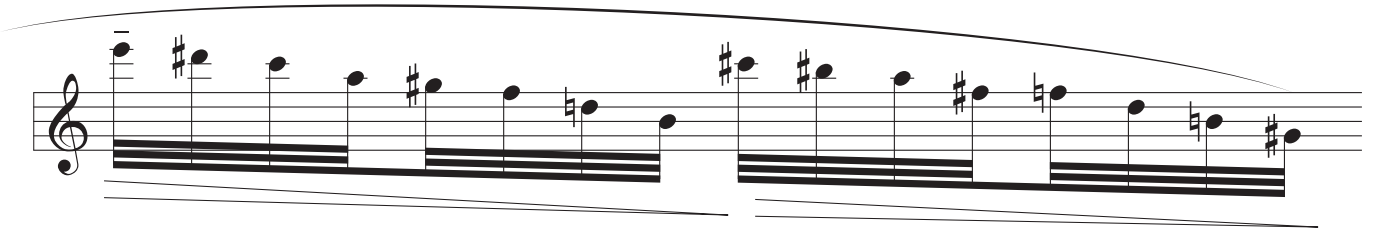
Musical notation for the second part of section A1, featuring a sequence of notes.

*p*

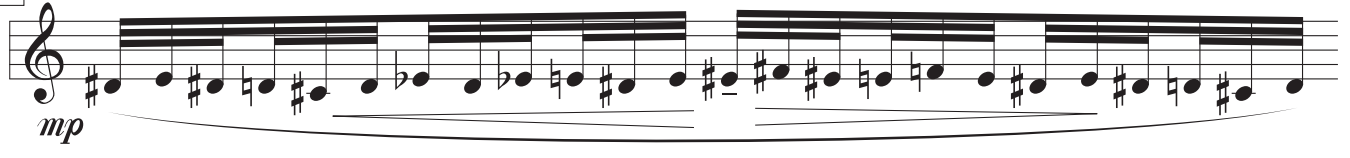
**A<sub>2</sub>**

*p*

*mp*



**A<sub>3</sub>**



**B**



**B<sub>1</sub>**

Musical staff 1 of section B1, starting with a treble clef and a mezzo-piano (*mp*) dynamic marking. The staff contains a melodic line with a series of eighth notes, some with accidentals, and a bass line with sustained notes.

Musical staff 2 of section B1, continuing the melodic and bass lines from the first staff.

Musical staff 3 of section B1, featuring a treble clef and a mezzo-piano (*mp*) dynamic marking. It includes a melodic line with a slur and a bass line with sustained notes.

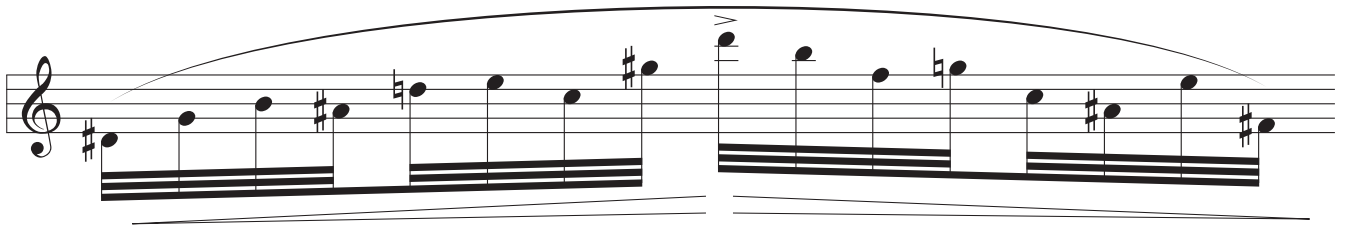
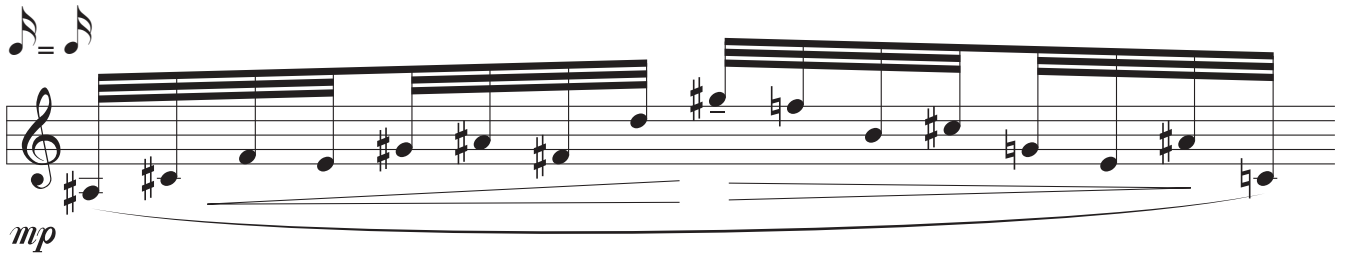
Musical staff 4 of section B1, continuing the melodic and bass lines.

**B<sub>2</sub>**

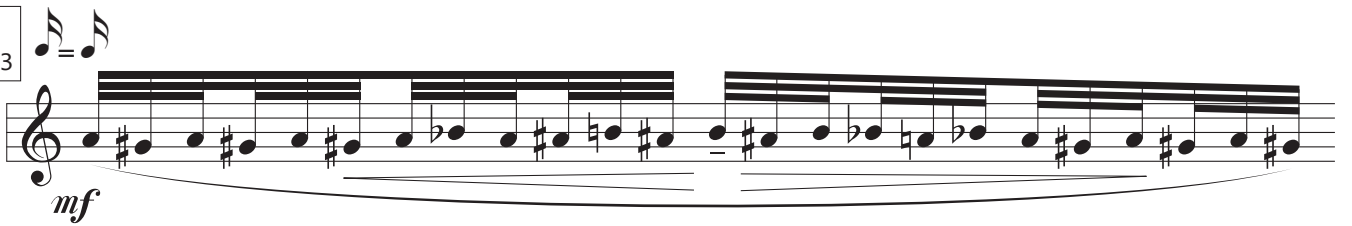
Musical staff 1 of section B2, starting with a treble clef and a mezzo-forte (*mf*) dynamic marking. It includes a melodic line with a slur and a bass line with sustained notes. A *p sub.* marking is present in the bass line.

Musical staff 2 of section B2, continuing the melodic and bass lines.

Musical staff 3 of section B2, continuing the melodic and bass lines.



**B<sub>3</sub>**



C

*p* *f* *mp* *f*

*mp* *f*

*mf*

*gliss. avec flatterzunge* *sffz* *kiss noise inspiré (avec bruit)* *sfz*

D

*mp*

*mp* (,)



**D<sub>1</sub>**

*mf* brusque

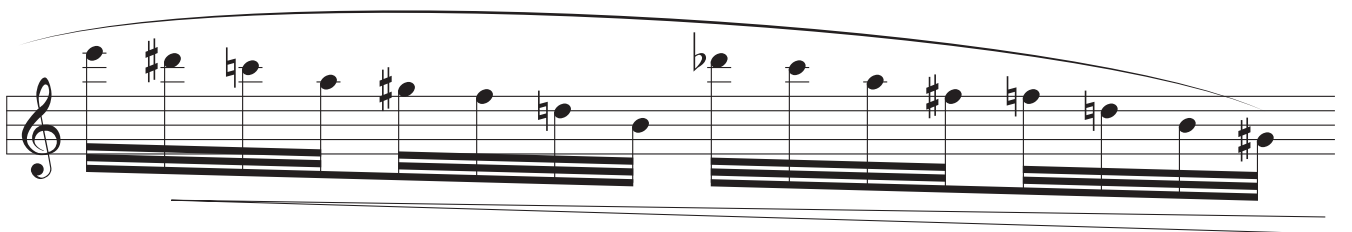
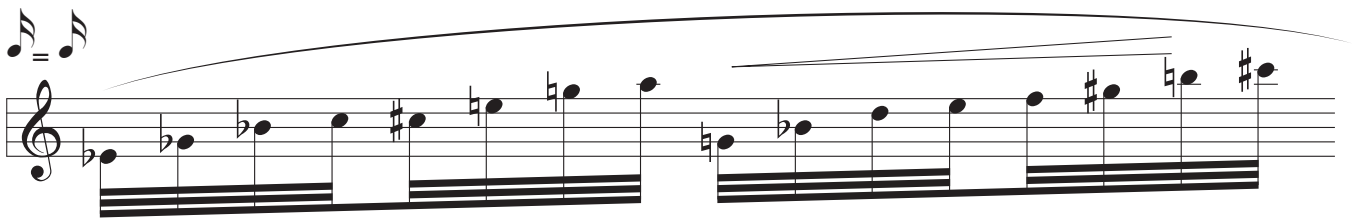
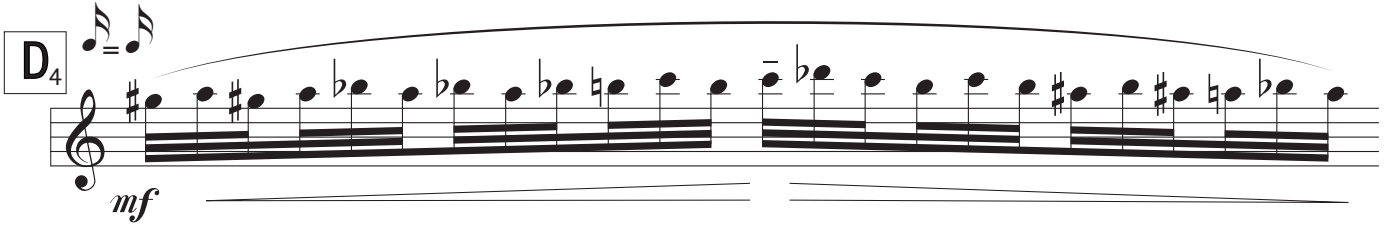
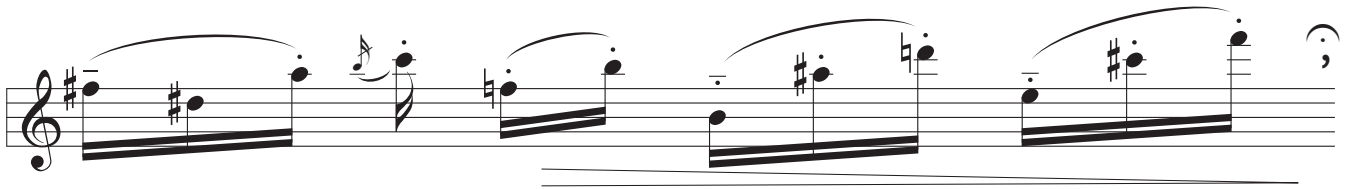
**D<sub>2</sub>**

*mf*

*mf*

**D<sub>3</sub>**

*mf* brusque



Musical staff with a long slur over a series of notes, including flats and sharps.

Musical staff with a long slur over a series of notes, including sharps and flats.

**F**

Musical staff with notes, slurs, and dynamic markings: *ff*, *sfz*, and *slap*.

Musical staff with a long slur over a series of notes, starting with *mp*.

Musical staff with notes, slurs, and dynamic markings: *sfz*, *p*, *pp*, *sfz*, and *sfz*. A question mark in a box is located at the end of the staff.

Musical staff with a long slur over a series of notes, starting with *pp*.

Musical staff with notes, slurs, and dynamic markings: *sfz* and *slap*.

5 - X - 1999  
Paris



[www.bernatvivancos.com](http://www.bernatvivancos.com)